

COLOR COATS

COLORED GLASS AGGREGATE

FABRINO COLOR COATS are specially produced glass granules the surfaces of which are coated transparently or in various colors in a multi-stage process.



TRANSPARENT



PURE WHITE
(ca. RAL 9010)



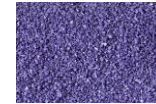
SULFUR YELLOW
(ca. RAL 1016)



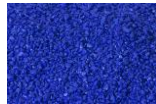
BRIGHT RED ORANGE
(ca. RAL 2008)



TRAFFIC RED
(ca. RAL 3020)



PEARL VIOLET
(ca. RAL 4011)



ULTRAMARINE BLUE
(ca. RAL 5002)



LIGHT BLUE
(ca. RAL 5012)



COBALT BLUE
(ca. RAL 5013)



TURQUOISE GREEN
(ca. RAL 6016)



YELLOW GREEN
(ca. RAL 6018)



JET BLACK
(ca. RAL 9005)



METALLIC
GOLDEN YELLOW



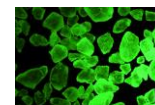
METALLIC
COPPER RED



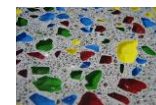
METALLIC
BRONZE BROWN



RETROPEARLS
TRANSPARENT



NIGHT GLOW
Refer to separate
tech. Data sheet.



Other colors available
on request.

CHARACTERISTICS

FABRINO COLOR COATS offer many advantages for architectural and decorative design. The glass aggregate can be produced in a vast array of colors (almost any RAL tone can be produced), the hardness is comparable to that of granite and the aggregates' resistance to acid and alkali attack make it a very versatile product. In addition the aggregate has been designed to be resistant to the alkali-silica reaction that can occur within concrete and thus is a very hard-wearing alternative to regular aggregate.

The intrinsic properties combined with aesthetic appeal make FABRINO COLOR COATS a brilliant design element within architectural concrete.

AREAS OF APPLICATION

FABRINO COLOR COATS are particularly suitable for polished surfaces such as designer floor screeds, artificial stone surfaces and pre-cast concrete elements. The surface can be washed out with our retarder HERATOL or with our negative retarder Amitol.

A further finishing option would be to acid wash the surface with our BETOGEL product in order to create a finely etched surface.

FABRINO COLOR COATS can also be used with synthetic resin-bound systems. By highly polishing concrete containing FABRINO COLOR COATS a brilliant depth of color can be produced within the material. Subject to order quantity it is possible to manufacture specific colors dependent on your requirements.

GUIDANCE FOR APPLICATION

FABRINO COLOR COATS are best added to a mix that is already soft in consistency and should be further mixed until the aggregate is sufficiently distributed.

The varying grain sizes of FABRINO COLOR COATS allow them to be easily substituted for the natural stone or gravel aggregates in the concrete mix. Through irregular grain shape, a strong bond is formed within the concrete or resin system. For best effect we recommend dyeing the concrete mix with either our liquid-based REBAcolor® or powder-based REBOxid® pigment.

FABRINO

Produktionsgesellschaft mbH & Co. KG | Augsburgener Straße 23 | D-87700 Memmingen
TELEFON +49 (0)8331 92506-0 | TELEFAX -36 | info@fabrino.eu | www.fabrino.eu

02/15

Sämtliche Datenblätter beruhen auf als richtig und zuverlässig betrachteten Daten und Angaben und dienen dem Kunden zu Überprüfungs- und Nachweiszwecken, jedoch ohne Garantie unsererseits hinsichtlich erreichbarer Ergebnisse. Anforderungen die über den Rahmen des Datenblattes hinausgehen bedürfen zwingend der rechtsverbindlichen schriftlichen Bestätigung. Die Produktbeschreibung befreit den Anwender nicht von seiner Sorgfaltspflicht. Alle Rechte des Käufers richten sich nach unseren allgemeinen Geschäftsbedingungen.

COLOR COATS

COLORED GLASS AGGREGATE

PAGE 2

QUANTITY

It is recommended that 30% of the aggregate quantity is FABRINO COLOR COATS.

Sampling must be carried out to ensure end results.

TECHNICAL DATA

Form	tough, granular
Color	various
Grain size	2-4 mm, 4-10 mm (other sizes on request)
Material Density	approx. 2.2 kg/ltr.
Apparent density	approx. 1.3 kg/ltr.
Container size	5 kg container 900 kg bulk bag

SAFETY

FABRINO COLOR COATS are not a hazardous material however the residual dust from the material should not be inhaled. This product is not designed for children and should not be given to them. Small parts and sharp edges can result in choking and suffocation if swallowed. See EU safety data sheet for further information.

Low adhesion of glass dust possible.

Traces of other colored aggregate possible (3-5%).

FABRINO

Produktionsgesellschaft mbH & Co. KG | Augsburgener Straße 23 | D-87700 Memmingen
TELEFON +49 (0)8331 92506-0 | TELEFAX -36 | info@fabrino.eu | www.fabrino.eu

02/15

Sämtliche Datenblätter beruhen auf als richtig und zuverlässig betrachteten Daten und Angaben und dienen dem Kunden zu Überprüfungs- und Nachweiszwecken, jedoch ohne Garantie unsererseits hinsichtlich erreichbarer Ergebnisse. Anforderungen die über den Rahmen des Datenblattes hinausgehen bedürfen zwingend der rechtsverbindlichen schriftlichen Bestätigung. Die Produktbeschreibung befreit den Anwender nicht von seiner Sorgfaltspflicht. Alle Rechte des Käufers richten sich nach unseren allgemeinen Geschäftsbedingungen.