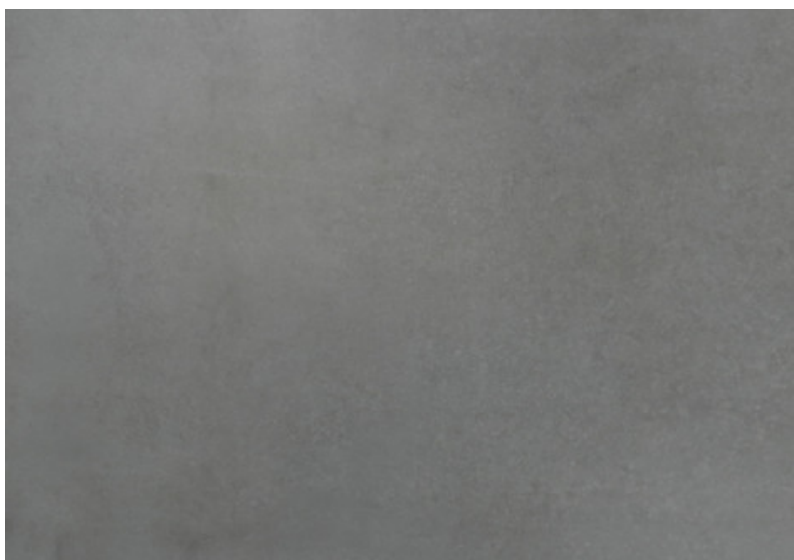
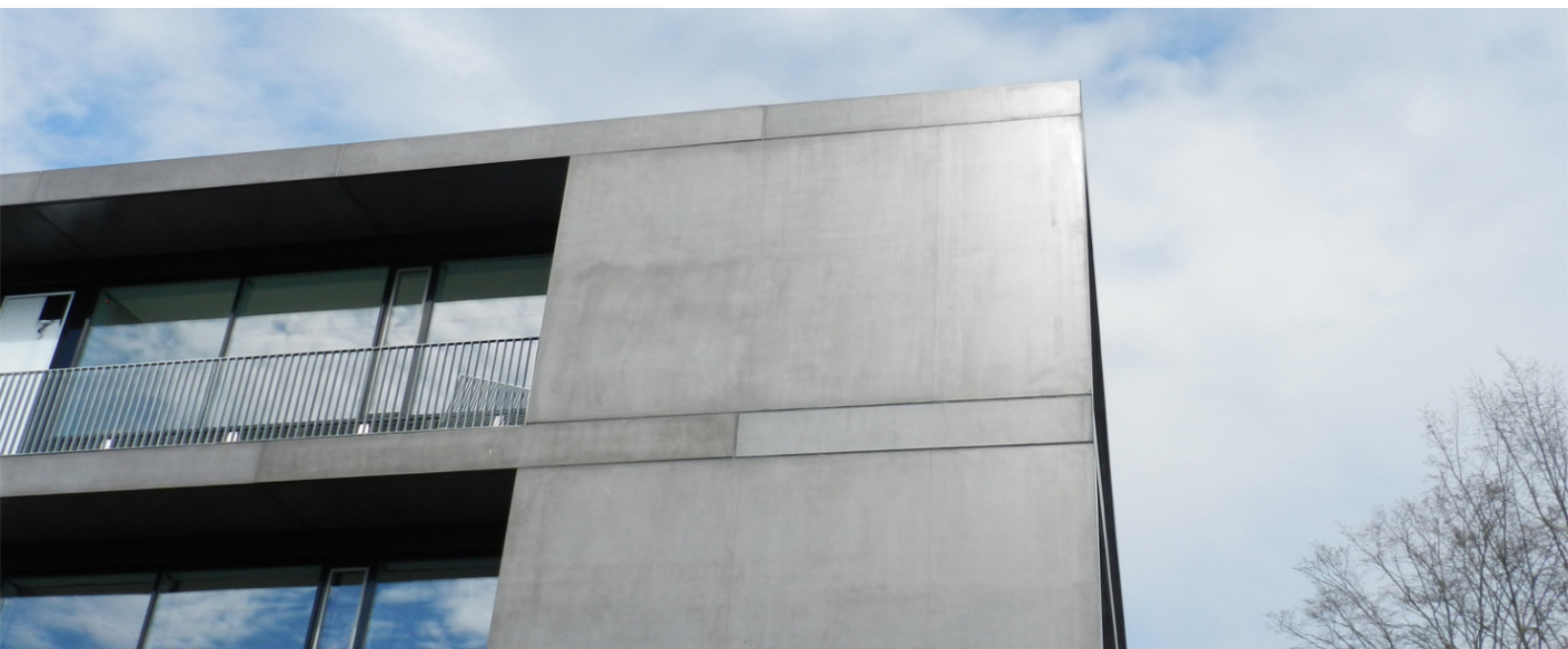


# SECONDARY SCHOOL USE OF COLOUR INTENSIFYING SURFACE PROTECTION



## OVERVIEW

PROJECT	Secondary School
PRODUCT	Colour Intensifying
EXPANSE	600 m <sup>2</sup>
REGION	Baden-Württemberg (D-72)



## PRODUCT FEATURES

Our Surface protection products have been developed to provide longlasting protection to concrete surfaces and elements against moisture penetration, efflorescence, oil and other chemical influences (e.g. graffiti). The main cause of weathering and building damage is water, which itself can carry pollutant emissions, micro-organisms and salts which gradually, over time, can cause serious damage to the concrete.



## AREAS OF APPLICATION

- » Cladding
- » Pre-cast elements
- » Concrete products
- » Bespoke elements