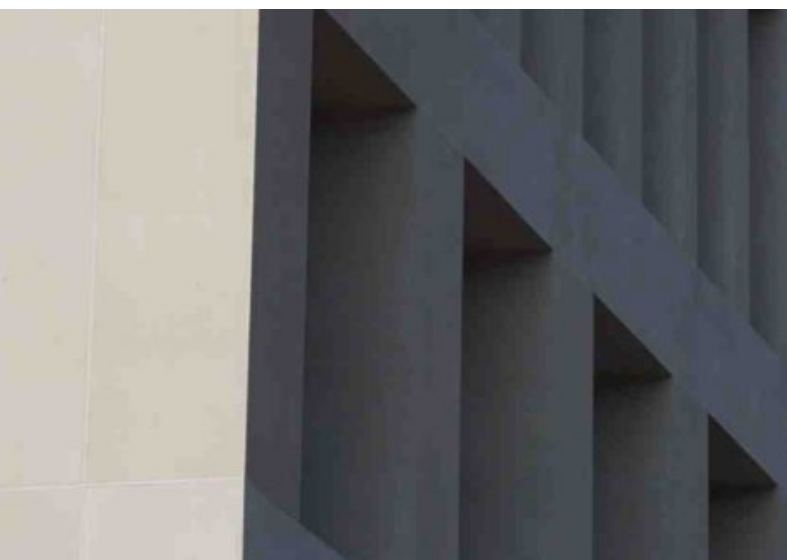


HUMBOLDT FORUM IN BERLIN

USE OF SURFACE PROTECTION ON A FACADE



OVERVIEW

PROJECT	new castle
PRODUCT	Sicorol F
EXPANSE	not specified
REGION	Berlin (D-10)
MISC	precast concrete elements: Dreßler Bau



PRODUCT FEATURES

Our surface protection products have been developed to provide longlasting protection to concrete surfaces and elements against moisture penetration, efflorescence, oil and other chemical influences (e.g. graffiti). The main cause of weathering and building damage is water, which itself can carry pollutant emissions, micro-organisms and salts with gradually, over time, can cause serious damage to the concrete.



AREAS OF APPLICATION

- » cladding
- » pre-cast elements
- » concrete products
- » bespoke elements