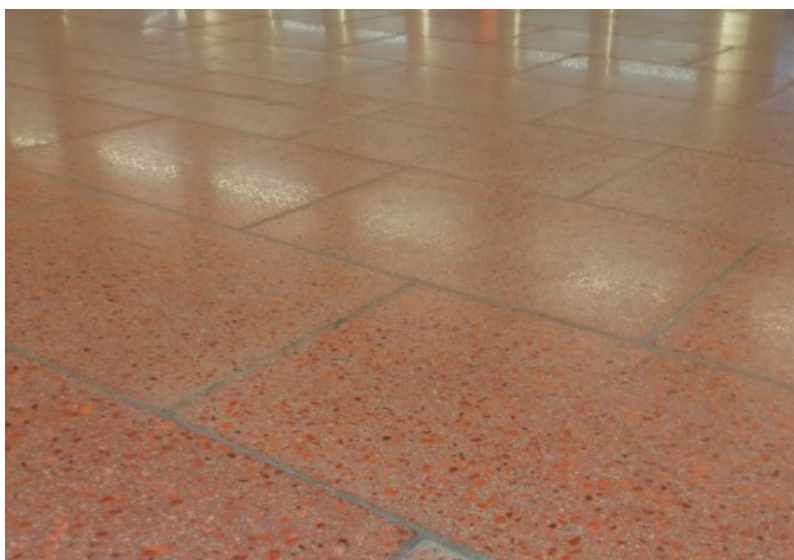
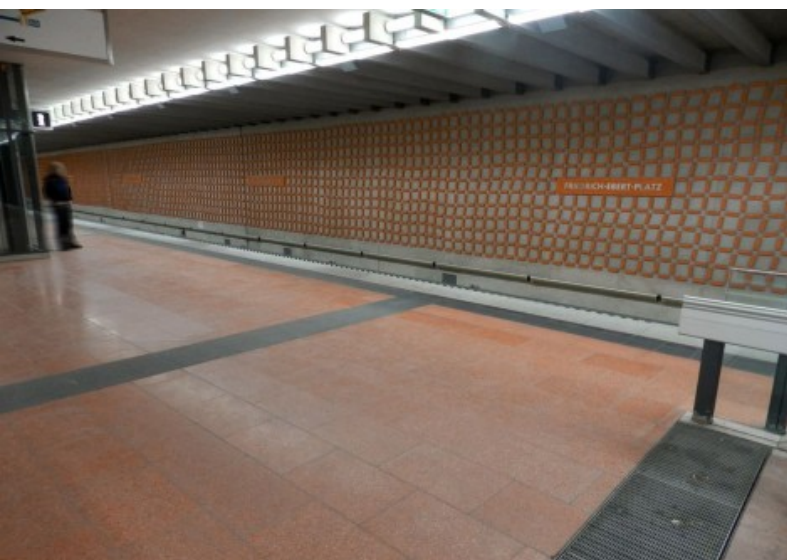


# FRIEDRICH-EBERT-PLATZ UNDERGROUND STATION USE OF GLASS AGGREGATE IN CONCRETE PRODUCTS



## OVERVIEW

<b>PROJECT</b>	Friedrich-Ebert-Platz Underground Station
<b>PRODUCT</b>	COLOR COATS, Light red-orange
<b>EXPANSE</b>	1,000 m²
<b>REGION</b>	Bavaria (D-90)



## PRODUCT FEATURES

FABRINO COLOR COATS are specially developed glass aggregates which have been surface treated with a multi-layer coloured or transparent coating. The patented production procedure for these high-quality concrete and screed glass-aggregates opens up a new realm of design and architectural possibilities. FABRINO COLOR COATS are ideally suitable for polished, washed and acidified surfaces.



## AREAS OF APPLICATION

- » Designer screed
- » Pre-cast elements
- » Architectural masonry blocks