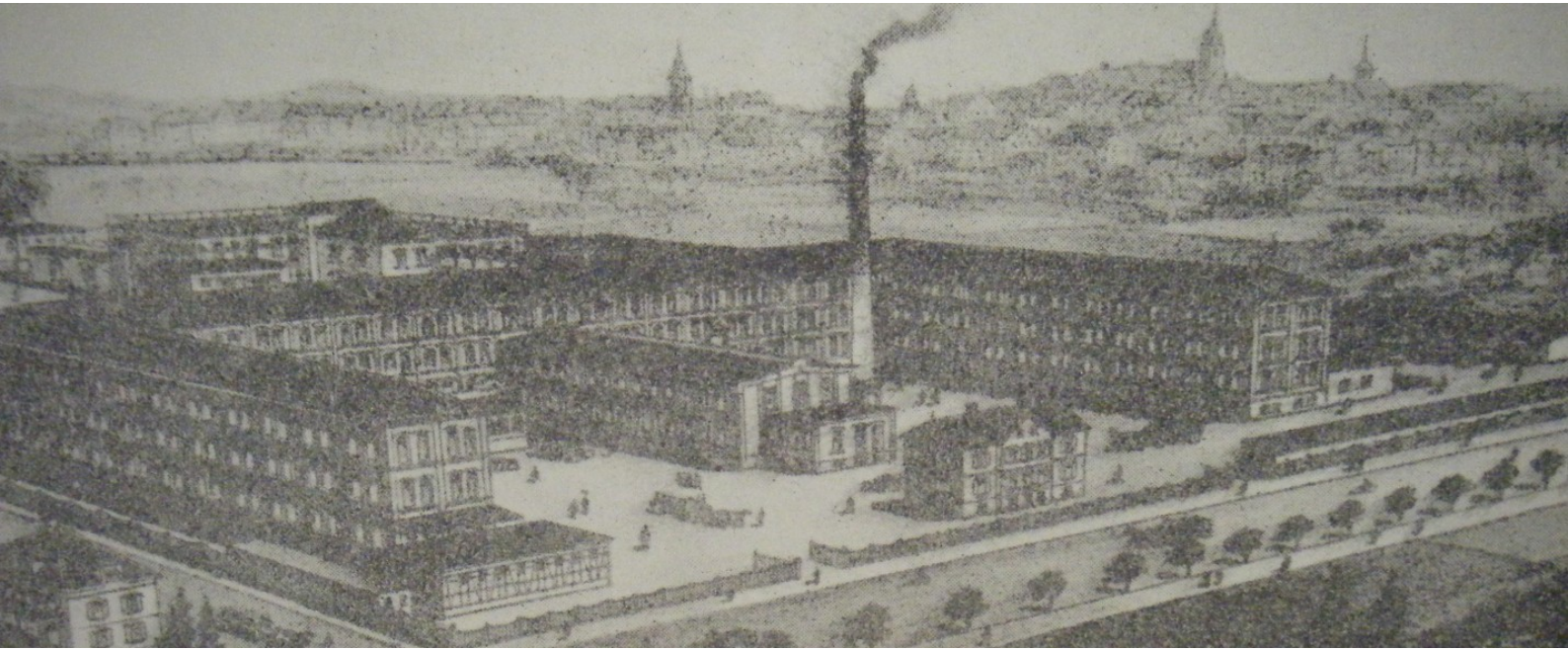


COMPANY IMAGE USE OF PHOTO CONCRETE ON A CONCRETE PLAQUE



OVERVIEW

PROJECT	Company Image
PRODUCT	Photo Concrete
EXPANSE	6m²
REGION	Baden-Württemberg (D-71)



PRODUCT FEATURES

With our logo and photo concrete technology it is possible to transfer photos, images and logos onto pre-cast concrete elements. In contrast to stenciling methods our technology does not rely on the influence of light and shadows to create an image in the finished element. Images can be protected against staining and efflorescence by using one of our industry-leading surface impregnators.



AREAS OF APPLICATION

- » Cladding
- » Designer garden and landscaping elements
- » Flooring elements
- » Bespoke products
- » (Use with in-situ concrete is not possible)