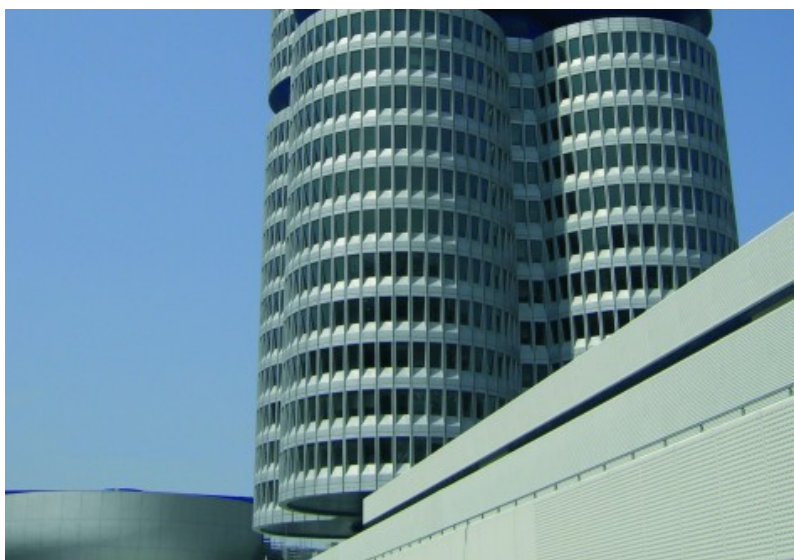


BMW HEADQUARTERS USE OF SURFACE PROTECTION ON CONCRETE SLAB AND HARDLANDSCAPING ELEMENTS



OVERVIEW

PROJECT	BMW Headquarters
PRODUCT	Surface Protection
EXPANSE	600 m ²
REGION	Bayern (D-80)



PRODUCT FEATURES

Our Surface protection products have been developed to provide longlasting protection to concrete surfaces and elements against moisture penetration, efflorescence, oil and other chemical influences (e.g. graffiti). The main cause of weathering and building damage is water, which itself can carry pollutant emissions, micro-organisms and salts which gradually, over time, can cause serious damage to the concrete.



AREAS OF APPLICATION

- » Cladding
- » Pre-cast elements
- » Concrete products
- » Bespoke elements