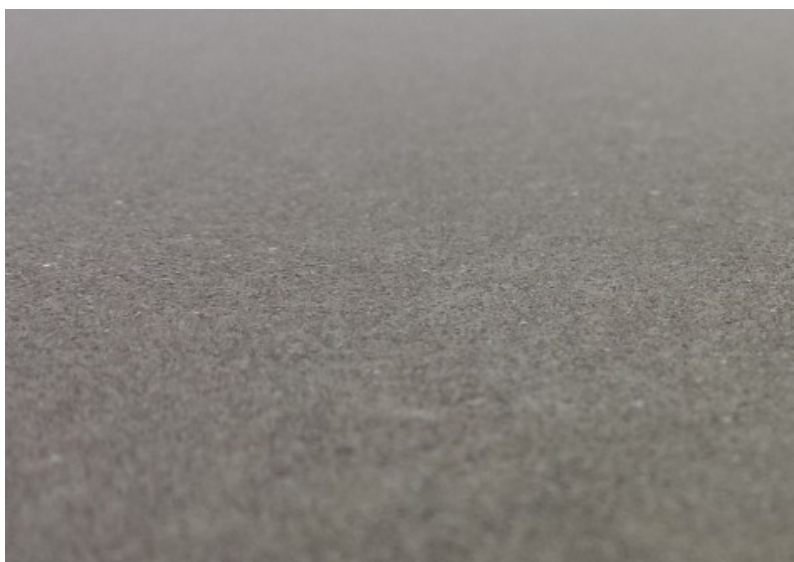


PARK AND GARDENS PROJECT USE OF ELUENT MICROGEL ON A CONCRETE FACADE



OVERVIEW

PROJECT Park and Gardens Project

PRODUCT Betogel

EXPANSE 600 m²

REGION Niedersachsen (D-26)

PRODUCT FEATURES

BETOGEL is a gel-based acid product which will micro-etch concrete surfaces, allowing the production of concrete with an appearance similar to sandstone.

AREAS OF APPLICATION

- » Cladding
- » Stairs
- » Pre-cast elements
- » Concrete products
- » Bespoke elements