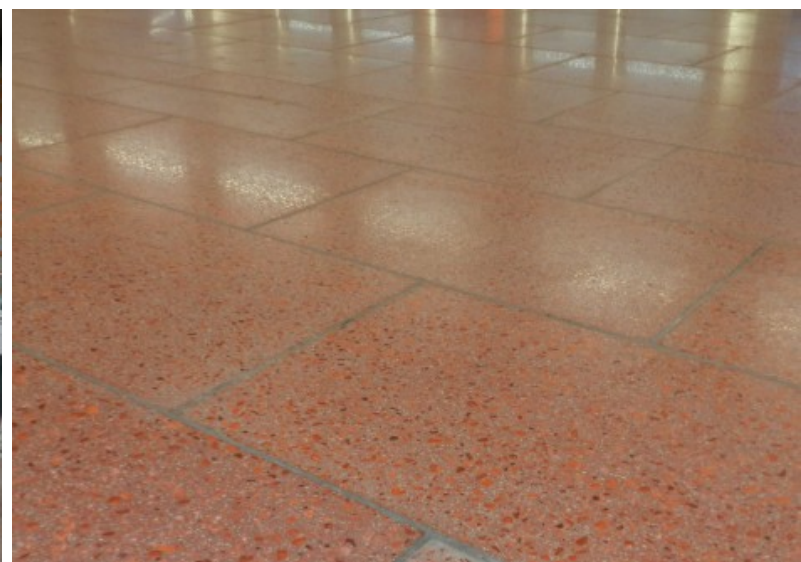


# FRIEDRICH-EBERT-PLATZ UNDERGROUND STATION USE OF GLASS AGGREGATE IN CONCRETE PRODUCTS



## OVERVIEW

**PROJECT** Friedrich-Ebert-Platz Underground Station

**PRODUCT** COLOR COATS, Light red-orange

**EXPANSE** 1,000 m<sup>2</sup>

**REGION** Bavaria (D-90)

## PRODUCT FEATURES

FABRINO COLOR COATS are specially developed glass aggregates which have been surface treated with a multi-layer coloured or transparent coating. The patented production procedure for these high-quality concrete and screed glass-aggregates opens up a new realm of design and architectural possibilities. FABRINO COLOR COATS are ideally suitable for polished, washed and acidified surfaces.

## AREAS OF APPLICATION

- » Designer screed
- » Pre-cast elements
- » Architectural masonry blocks